

Holland  America

# Alaska

2026 CRUISES

**#1 CRUISE LINE IN ALASKA**  
WILDLIFE & WILDERNESS TOURS

**SEE MORE ALASKA GLACIERS WITH US**  
THAN WITH ANY OTHER CRUISE LINE

# Contents

TOP REASONS TO CRUISE ALASKA WITH US	2
EXPERIENCE THE BEST OF ALASKA	3
SEE MORE ALASKA GLACIERS WITH US	4
HOLLAND AMERICA YOUR GLACIER GUIDES	5
MORE ACCESS TO WILDLIFE	6
VISIT ALASKA NATIONAL PARKS HOLLAND	7
AMERICA ALASKA CRUISES	8
7-DAY EXPERIENCES	9
14-DAY EXPLORATIONS	10
<b>LEGENDARY</b> 28-DAY ARCTIC CIRCLE SOLSTICE	11
<b>HOLLAND AMERICA ALASKA CRUISE TOURS</b>	12
WHY BOOK AN ALASKA CRUISE TOUR?	13
PREMIER DENALI EXPERIENCE	14
HOLLAND AMERICA DENALI LODGE	15
LUXURY RAIL EXPERIENCE	16
JOURNEY INTO DENALI NATIONAL PARK	17
HISTORIC DAWSON CITY, YUKON	18
EXPERIENCE ALASKA YOUR WAY	19
<b>FEATURED</b> 13-DAY ALASKA, DENALI & YUKON CRUISE TOUR	20
2026 CRUISE TOUR ITINERARY OPTIONS: ALASKA & DENALI	21
2026 CRUISE TOUR ITINERARY OPTIONS: ALASKA, DENALI & YUKON	22
2026 CRUISE TOURS: FEATURES & DINING PLANS	23
<b>WE ♥ ALASKA</b>	24
DISCOVER ALASKA	25
TASTE ALASKA	26
EXPERIENCE ALASKA	27
<b>ONBOARD EXPERIENCES</b>	
DINING – BARS & LOUNGES	28
ACTIVITIES DAY & NIGHT	29
THE ULTIMATE SPA EXPERIENCE	30
<b>HAVE IT ALL EARLY BOOKING BONUS</b>	31
<b>TERMS &amp; CONDITIONS</b>	32



To/From:  
Dutch Harbor  
Nome  
ARCTIC CIRCLE  
LITTLE DIOMEDE ISLAND



**MAP LEGEND**

- 7-Day Alaska Inside Passage Cruises
- 7-Day Glacier Discovery Cruises
- 7-Day Alaska Explorer Cruises
- 14-Day Great Alaska Explorer Cruises
- 28-Day Arctic Circle Solstice Cruise
- Land Routes
- Flight Routes
- ||||| McKinley Explorer® Railway
- ||||| White Pass & Yukon Route Railway
- ||||| Cruisetrain



# Top Reasons

TO CRUISE ALASKA WITH HOLLAND AMERICA



## SEE MORE GLACIERS

Cruise Alaska with Holland America and encounter these icy giants. A stunning sight hundreds of years in the making.



## #1 IN ALASKA WILDLIFE & WILDERNESS TOURS

175+ animal sanctuary and sightseeing opportunities including the Alaska Wildlife Conservation Center's "Moose Encounter."



## COMPLIMENTARY DENALI TOURS

Discover the history, wildlife, and wilderness of Denali National Park & Preserve on one of two complimentary park tours.



## WE ♥ ALASKA™ EXPERIENCE

Our 360° destination programming features Alaska Up Close presentations, fresh local cuisine and curated shore excursions.



## FRESH LOCAL SEAFOOD

Holland America is the first and only cruise line triple-certified for sustainable, wild-caught, and responsibly farmed seafood.



## LUXURY RAIL EXPERIENCE

Every Alaska cruisetour includes a ride on board our privately owned, two-story, glass-domed McKinley Explorer® railcars.



# EXPERIENCE THE Best of Alaska



## ALASKA CRUISES



Glacier Bay National Park & Preserve

- 7- to 28-day itineraries
- Convenient weekend departures from Seattle and Vancouver
- Privileged access to Glacier Bay National Park & Preserve
- Onboard National Park Service Rangers, Wildlife Experts and more

Click to **LEARN MORE** about **ALASKA CRUISES**



## ALASKA CRUISETOURS

AVAILABLE FOR BOOKING FALL 2024



Holland America Denali Lodge

- 9- to 18-day itineraries
- A land-and-sea package that brings you into the heart of Alaska's wild interior
- All cruisetours include a visit to Denali National Park & Preserve
- Exclusive access to Canada's Klondike Yukon Territory on Denali & Yukon itineraries
- Local Tour Directors providing expert assistance on Denali & Yukon itineraries
- Private glass-domed railcars and premium wilderness lodge at the gates of Denali

Click to **LEARN MORE** about **ALASKA CRUISETOURS**



SEE MORE

# Alaska Glaciers

WITH US THAN WITH ANY OTHER CRUISE LINE

We understand how important seeing glaciers on an Alaska cruise is to you.

Experience these blue-hued giants in your preferred way:

**BY SEA:** Take in glacier views from the deck of the ship or hop aboard a catamaran, rigid inflatable boat (RIB), or kayak for an up-close encounter

**BY AIR:** Soar above for breathtaking aerial views from a seaplane or helicopter

**BY LAND:** Dogsled across the icy surface behind Alaska Huskies

Click to **LEARN MORE** about our **TOP EXCURSIONS**



Valdez Glacier



Hiking



Sailing



Flightseeing



Dogsledding

HOLLAND AMERICA

# Your Guide to Glaciers in Alaska

Not only is blue glacial ice a stunning sight, but glaciers tell us stories of the Earth's history. Glaciers take hundreds of years to form and can show us what the atmosphere was like and what kind of mammals existed thousands of years ago. Their ability to flow makes these rivers of ice even more unique. Ready for an unforgettable Alaska glacier viewing experience? Embark on the ultimate Alaskan cruise with Holland America Line.



**Authorized  
Concessioner**  
Glacier Bay National Park

# MORE ACCESS TO Wildlife THAN ANY OTHER CRUISE LINE

## #1 IN ALASKA WILDLIFE & WILDERNESS TOURS

Holland America provides more access to Alaska wildlife than any other cruise line. Our 175+ animal sanctuary, sightseeing, and shore excursions bring you face-to-face with creatures great and small. Experience Alaska wildlife up close with Holland America's exclusive "Moose Encounter" in partnership with the Alaska Wildlife Conservation Center.

Click to **LEARN MORE** about  
our **TOP EXCURSIONS**



Gray wolf



Dall sheep



Sea otter



Humpback whale



Grizzly bears



Caribou

# Alaska National Parks

YOU CAN VISIT WITH US

📍 **DENALI NATIONAL PARK & PRESERVE** Denali's sprawling 6 million acres are home to diverse wildlife, imposing landscapes and North America's highest mountain peak. Experience the park's majesty for yourself on a Holland America Alaska cruisetour, all of which include a 1- to 3-night stay at the gates of Denali.

📍 **GLACIER BAY NATIONAL PARK & PRESERVE** Part of the larger Kluane / Wrangell–St. Elias / Glacier Bay / Tatshenshini–Alsek UNESCO World Heritage site and one of the world's largest internationally protected biosphere reserves, 3.3 million-acre Glacier Bay is best experienced by sea.

📍 **KENAI FJORDS NATIONAL PARK** Kenai Fjords National Park boasts cascading glaciers, lush waterfalls and many of Alaska's most beloved wildlife species. See these wonders for yourself on our 14-Day *Ultimate Denali* cruisetour including two nights in spectacular Seward.

📍 **WRANGELL–ST. ELIAS NATIONAL PARK** At a staggering 13.2 million acres, Wrangell–St. Elias National Park has more than earned its nickname, "The Mountain Kingdom of North America." Home to Hubbard Glacier, it's also the largest national park in the United States.

**LEARN MORE** about the  
**NATIONAL PARKS WE VISIT**







HOLLAND AMERICA

# Alaska Cruises

---

**WE'VE BEEN VISITING ALASKA SINCE 1947  
BEFORE IT WAS EVEN A STATE!**



# 7-Day Experiences



## 7-DAY ALASKA EXPLORER

This roundtrip sailing from Seattle features convenient weekend departures and stops in historic Juneau, stunning Sitka, and charming Ketchikan. Visits to either Glacier Bay or Dawes Glacier complete this classic exploration of the 49th state's world-renowned wonders.



### 7-DAY ALASKA EXPLORER

Roundtrip Seattle

**Eurodam**

2026 **Apr** 25; **May** 2, 9, 16, 23, 30;  
**Jun** 6, 13, 20, 27; **Jul** 4, 11, 18, 25;  
**Aug** 1, 8, 15, 22, 29; **Sep** 5, 12, 19, 26



### 7-DAY ALASKA EXPLORER

Roundtrip Seattle

**Noordam**

2026 **Apr** 26; **May** 3, 10, 17, 24, 31;  
**Jul** 5, 12, 19, 26; **Aug** 2, 9, 16

## 7-DAY GLACIER DISCOVERY

Both the north- and south-bound iterations of this cruise call on Skagway, Juneau, and Ketchikan. The itinerary also includes two full "Glacier Days" in Glacier Bay National Park & Preserve and either grand Hubbard Glacier or glorious College Fjord.



### 7-DAY GLACIER DISCOVERY NORTHBOUND

Vancouver to Whittier (Anchorage)

**Westerdam**

2026 **May** 10, 24; **Jun** 7, 21; **Jul** 5, 19;  
**Aug** 2, 16, 30

**Nieuw Amsterdam**

2026 **May** 17, 31; **Jun** 14, 28; **Jul** 12, 26;  
**Aug** 9, 23; **Sep** 6



### 7-DAY GLACIER DISCOVERY SOUTHBOUND

Whittier (Anchorage) to Vancouver

**Westerdam**

2026 **May** 17, 31; **Jun** 14, 28; **Jul** 12, 26;  
**Aug** 9, 23; **Sep** 6

**Nieuw Amsterdam**

2026 **May** 24; **Jun** 7, 21; **Jul** 5, 19;  
**Aug** 2, 16, 30; **Sep** 13

## 7-DAY ALASKA INSIDE PASSAGE

This weeklong cruise sails roundtrip from Vancouver, calling on Juneau, Skagway and Ketchikan before navigating back through Alaska's Inside Passage. Visits to Glacier Bay National Park & Preserve and the Tracy Arm Fjord round out this itinerary.



### 7-DAY ALASKA INSIDE PASSAGE

Roundtrip Vancouver

**Koningsdam**

2026 **May** 2, 9, 16, 23, 30; **Jun** 6, 13, 20, 27;  
**Jul** 4, 11, 18, 25; **Aug** 1, 8, 15, 22, 29;  
**Sep** 5, 12, 19, 26

**Zaandam**

2026 **May** 6, 13, 20, 27; **Jun** 3, 10, 17, 24;  
**Jul** 1, 8, 15, 22, 29; **Aug** 5, 12, 19, 26;  
**Sep** 2, 9, 16

**Nieuw Amsterdam**  
 2026 **Sep** 20



# 14-Day Explorations

Uncover Alaska’s popular ports and hidden gems on a two-week journey of discovery. Explore the 49th state’s largest cities and uncover its less-travelled wonders, stepping into the rough-and-ready world of Alaska’s commercial fisheries in Kodiak and marveling at glaciers, canyons, and waterfalls in Valdez.



### 14-DAY GREAT ALASKA EXPLORER

Roundtrip Vancouver

*Nieuw Amsterdam*  
2026 May 3

### 14-DAY GREAT ALASKA EXPLORER

Roundtrip Seattle

*Noordam*  
2026 Aug 23



### 14-DAY GREAT ALASKA EXPLORER

Roundtrip Vancouver

*Westerdam*  
2026 Sep 13

Cruise itineraries and onboard offerings are not guaranteed.





# 28-DAY ARCTIC CIRCLE SOLSTICE

**ROUNDTrip SEATTLE**      *Noordam*      **2026 Jun 7**

- Venture north of the Arctic Circle during the Summer Solstice to experience Alaska beneath the glow of the midnight sun
- Traverse the Bering Sea while enjoying scenic cruising along the Inside Passage, Hubbard Glacier, Glacier Bay and more
- Call on such classic ports as Ketchikan and Juneau as well as unique stops including Nome and the fabled Kodiak Islands





HOLLAND AMERICA **ALASKA**  
**Cruisetours**

COMBINE THE BEST OF AN ALASKA CRUISE WITH  
AN UNFORGETTABLE JOURNEY INTO THE HEART OF ALASKA'S INTERIOR



WHY BOOK AN ALASKA

# Cruisetour?

- **LUXURY RAIL EXPERIENCE** Travel in style through Alaska’s interior on board Holland America’s timeless luxury McKinley Explorer® railcars
- **COMPLIMENTARY DENALI TOURS** All Alaska cruisetours include a guided visit to Denali National Park & Preserve
- **THE YUKON EXPERIENCE** The only cruise line taking you into the heart of Yukon Territory with expert-led guides
- **UNESCO SITES** All Alaska cruisetours include a visit to at least one of Alaska’s UNESCO World Heritage sites
- **ALASKA’S WILDLIFE ON LAND** Spot Alaska’s “Big 5” with the cruise line that’s #1 in Alaska Wildlife & Wilderness Tours



Caribou, Denali National Park & Preserve



Find the perfect Alaska cruisetour for you with our interactive quiz! Combine your cruise with a scenic train ride and up to 3 nights at Denali National Park & Preserve plus a guided journey into the wild Yukon Territory.





PREMIER

# Denali Experience

Embark on a luxury train ride aboard our private glass-domed McKinley Explorer® railcars. Journey through Alaska's interior as you make your way to your new home for 1-3 nights. Your destination? Our exclusive 60-acre Holland America Denali Lodge — your base camp for adventure at the gates of Denali National Park & Preserve.

Arrive to newly renovated rooms, breathtaking views and easy access to bustling Denali Square™. Here, tuck into celebratory meals, shop for handcrafted local goods, enjoy live entertainment and swap tales around a firepit.



Sled dog puppy



Local craft beer



Holland America Denali Lodge



Denali Square





HOLLAND AMERICA

# Denali Lodge



Denali Suites



TASTE  
ALASKA

Karstens Public House



Denali Square Amphitheater



Denali Artist-in-Residence

## RECHARGE IN PRIVATE DENALI SUITES

Elevate your Denali Lodge experience by upgrading to a Denali Suite. Spread out in your spacious seating area, take in stunning park views from your private balcony, and enjoy a range of amenities including an in-suite coffee machine, refrigerator, safe, and more.

## TASTE ALASKA AT DENALI SQUARE

Here, authentic Alaska flavours take center stage. Grab a morning cup of coffee and pick up a sandwich to go at Karstens Market & Espresso, savour regional comfort food and local craft beer at Karstens Public House, and enjoy a family-style Alaska feast at the Gold Nugget Saloon's *Music of Denali* dinner theater.

## DENALI SQUARE AMPHITHEATER

At the heart of Denali Square lies our covered amphitheater. Take a seat on one of the outdoor benches to watch a National Park Service Ranger presentation, wildlife expert lecture, demonstration of regional traditions or live music performance by local artists.

## ARTIST-IN-RESIDENCE CABIN

Artists have been living, working and creating in U.S. national parks since the late 19th century. Experience this proud tradition for yourself at Denali Square's Artist-in-Residence Cabin, where you'll find local artists happy to display and discuss the process behind each unique work of art.





# Luxury Rail

EXPERIENCE

Embrace the timeless elegance of leisure travel and enjoy unmatched comfort with top-notch service aboard Holland America's private, two-level, glass-domed McKinley Explorer® railcars.

- **LUXURY TRAIN JOURNEY** Every cruisetour features a ride on board our McKinley Explorer® railcars
- **PANORAMIC EXPERIENCE** Take in awe-inspiring vistas of Hurricane Gulch, Broad Pass and more
- **ELEGANT DINING** Savour regional cuisine in the charming, elegantly appointed dining car
- **OPEN-AIR PLATFORM** Breathe in crisp mountain air and enjoy unobstructed landscape views
- **SCENIC COMMENTARY** Listen to engaging stories and insights from our expert guides as the landscape unfolds before you





JOURNEY INTO

# Denali National Park

**OUR ALASKA CRUISETOURS BRING YOU TO THE GATES OF DENALI NATIONAL PARK & PRESERVE AND BEYOND**

- Venture deep into the park's unspoiled wilderness on the ***Tundra Wilderness Tour***, included on all 2- and 3-night stays at Holland America Denali Lodge
- Discover the beauty and stories of the park on the ***Denali Natural History Tour***, included on all 1-night stays at Holland America Denali Lodge



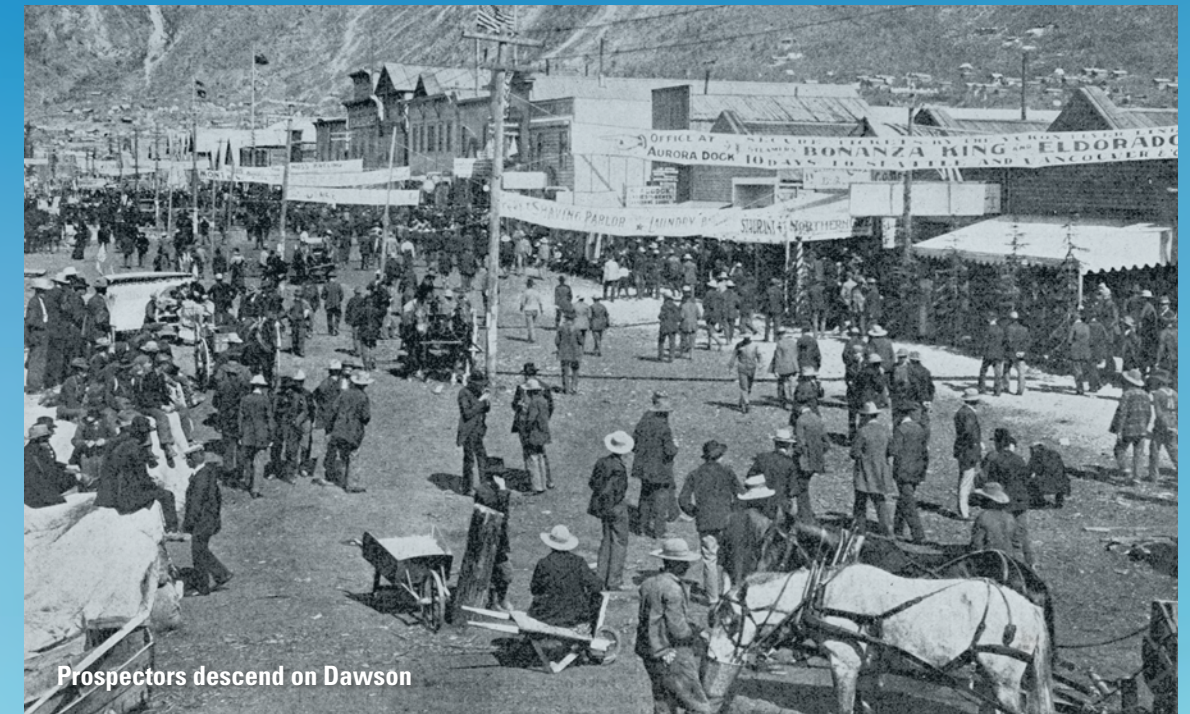
HISTORIC

# Dawson City, Yukon

Venture where few have gone before with the only cruise line offering overnight stays in the heart of the sub-arctic Tr'ondëk-Klondike region — a UNESCO World Heritage site that tells the story of the Tr'ondëk Hwëch'in people and the effects of Gold Rush expansion and colonialism. Explore Dawson City, known for its sweeping landscapes, Native traditions, and Klondike Gold Rush history, and follow in the footsteps of 1896 prospectors at the meeting of the Klondike and Yukon Rivers.

Highlights include:

- Complimentary **Klondike Gold Tour** on all Yukon itineraries
- An immersive journey into Klondike Gold Rush history
- The historic White Pass & Yukon Route Railway
- Expert insights from local Tour Directors
- Overnight stays at the Holland America Dawson City Inn



Prospectors descend on Dawson



# EXPERIENCE Alaska Your Way



	CLASSIC ALASKA & DENALI	SIGNATURE ALASKA & DENALI	ULTIMATE ALASKA & DENALI	ALASKA, DENALI & YUKON
<b>WHAT IS IT?</b>	Alaska & Denali highlights	Best of Alaska & Denali	Best of Alaska & Denali + a quaint Alaska town	Best of Alaska & Denali + the Yukon Territory
<b>WHICH CRUISE IS INCLUDED?</b>	7-Day <i>Glacier Discovery</i>	7-Day <i>Glacier Discovery</i>	7-Day <i>Glacier Discovery</i>	7-Day <i>Glacier Discovery</i> <b>OR</b> 7-Day <i>Alaska Inside Passage</i> (3–4 nights)
<b>HOW MANY DAYS ON LAND?</b>	2–3	3–5	7	6–10
<b>HOW MANY NIGHTS AT DENALI NATIONAL PARK?</b>	1	2–3	2	2–3
<b>WHICH “GLACIER DAYS” ARE INCLUDED?</b>	<ul style="list-style-type: none"> <li>Glacier Bay National Park &amp; Preserve</li> <li>College Fjord OR Hubbard Glacier</li> </ul>	<ul style="list-style-type: none"> <li>Glacier Bay National Park &amp; Preserve</li> <li>College Fjord OR Hubbard Glacier</li> </ul>	<ul style="list-style-type: none"> <li>Glacier Bay National Park &amp; Preserve</li> <li>College Fjord OR Hubbard Glacier</li> </ul>	<ul style="list-style-type: none"> <li>Glacier Bay National Park &amp; Preserve*</li> <li>College Fjord OR Hubbard Glacier†</li> </ul>
<b>WHICH DENALI NATIONAL PARK TOUR IS INCLUDED?</b>	<i>Denali Natural History Tour</i>	<b><i>Tundra Wilderness Tour</i>**</b>	<b><i>Tundra Wilderness Tour</i>**</b>	<b><i>Tundra Wilderness Tour</i>**</b>
<b>IS THE MCKINLEY EXPLORER® RAILWAY INCLUDED?</b>	Yes	Yes	Yes	Yes
<b>WHY SHOULD I CHOOSE THIS CRUISETOUR?</b>	Denali + the Alaska Railroad in the shortest amount of time	Signature Denali experiences + up to 3-night stays	Iconic Alaska favorites + Alyeska, Seward or Homer	Unique guided tour of Denali + a visit to Dawson City with a complimentary <b><i>Klondike Gold Tour</i></b>

NEW

# 13-DAY ALASKA, DENALI & YUKON CRUISETOUR

Nieuw Amsterdam

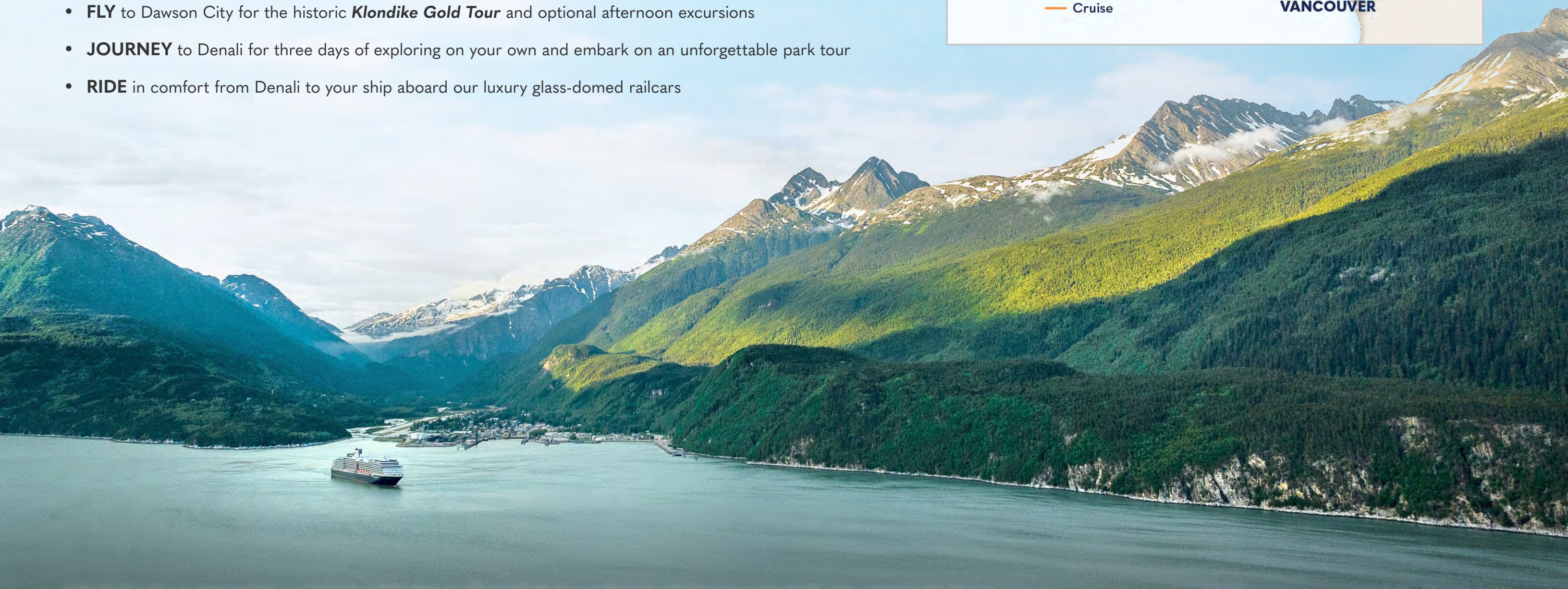
2026 May 18; Jun 1, 15, 29;  
Jul 13, 27; Aug 10, 24; Sep 7

Westerdam

2026 May 25; Jun 8, 22;  
Jul 6, 20; Aug 3, 17, 31

## FAIRBANKS TO VANCOUVER

- **VENTURE** to Fairbanks for a downtown hotel stay and the exciting Riverboat *Discovery* tour
- **FLY** to Dawson City for the historic *Klondike Gold Tour* and optional afternoon excursions
- **JOURNEY** to Denali for three days of exploring on your own and embark on an unforgettable park tour
- **RIDE** in comfort from Denali to your ship aboard our luxury glass-domed railcars





# 2026 CRUISETOUR ITINERARY OPTIONS Alaska & Denali



--- Air Travel  
--- Land Transportation  
--- Rail Transportation  
--- D1-D0 Ship Travel

**INCLUDED TRANSPORTATION**  
 Cruisetour flights require passport information and middle names, if applicable, to be submitted at the time of booking.

<span style="background-color: #d9ead3; border: 1px solid #ccc; padding: 2px;">On Land</span>	<span style="background-color: #d9ead3; border: 1px solid #ccc; padding: 2px;">At Sea</span>	<span style="border: 1px solid black; padding: 2px;">✕</span> Luxury Railcar	<span style="border: 1px solid black; padding: 2px;">🚗</span> Luxury Motorcoach	<span style="border: 1px solid black; padding: 2px;">🚢</span> Cruise	<span style="border: 1px solid black; padding: 2px;">✈️</span> Plane
---	--	--	---	--	--

## SIGNATURE ALASKA & DENALI CRUISETOURS (2 OR 3 NIGHTS AT DENALI)

	DAY 0	1	2	3	4	5	6	7	8	9	10	11	12
<b>D1</b>													
land first	Fairbanks	Triple Denali		Anchorage	Whittier	Hubbard Glacier	Glacier Bay	Skagway	Juneau	Ketchikan	Inside Passage	Disembark Vancouver	
cruise first	Vancouver	Inside Passage	Ketchikan	Juneau	Skagway	Glacier Bay	College Fjord	Anchorage	Triple Denali		Fairbanks	Cruisetour Ends	
<b>D2</b>													
land first	Anchorage	Triple Denali		Whittier	Hubbard Glacier	Glacier Bay	Skagway	Juneau	Ketchikan	Inside Passage	Disembark Vancouver		DIRECT TO DENALI
cruise first	Vancouver	Inside Passage	Ketchikan	Juneau	Skagway	Glacier Bay	College Fjord	Triple Denali		Anchorage	Cruisetour Ends		
<b>D0</b>													
land first	Fairbanks	Double Denali		Whittier	Hubbard Glacier	Glacier Bay	Skagway	Juneau	Ketchikan	Inside Passage	Disembark Vancouver		DIRECT TO DENALI
cruise first	Vancouver	Inside Passage	Ketchikan	Juneau	Skagway	Glacier Bay	College Fjord	Double Denali		Fairbanks	Cruisetour Ends		
<b>D5</b>													
land first	Fairbanks	Double Denali		Anchorage	Whittier	Hubbard Glacier	Glacier Bay	Skagway	Juneau	Ketchikan	Inside Passage	Disembark Vancouver	
cruise first	Vancouver	Inside Passage	Ketchikan	Juneau	Skagway	Glacier Bay	College Fjord	Anchorage	Double Denali		Fairbanks	Cruisetour Ends	
<b>D6</b>													
land first	Anchorage	Double Denali		Whittier	Hubbard Glacier	Glacier Bay	Skagway	Juneau	Ketchikan	Inside Passage	Disembark Vancouver		DIRECT TO DENALI
cruise first	Vancouver	Inside Passage	Ketchikan	Juneau	Skagway	Glacier Bay	College Fjord	Double Denali		Anchorage	Cruisetour Ends		

## ULTIMATE ALASKA & DENALI CRUISETOURS (2 NIGHTS AT DENALI)

	DAY 0	1	2	3	4	5	6	7	8	9	10	11	12	13	14
<b>D3</b>															
land first	Fairbanks	Double Denali		Anchorage	Seward	Whittier	Hubbard Glacier	Glacier Bay	Skagway	Juneau	Ketchikan	Inside Passage	Disembark Vancouver		
cruise first	Vancouver	Inside Passage	Ketchikan	Juneau	Skagway	Glacier Bay	College Fjord	Seward	Anchorage	Double Denali		Fairbanks	Cruisetour Ends		
<b>D4</b>															
land first	Fairbanks	Double Denali		Anchorage	Alyeska	Whittier	Hubbard Glacier	Glacier Bay	Skagway	Juneau	Ketchikan	Inside Passage	Disembark Vancouver		
cruise first	Vancouver	Inside Passage	Ketchikan	Juneau	Skagway	Glacier Bay	College Fjord	Alyeska	Anchorage	Double Denali		Fairbanks	Cruisetour Ends		
<b>DH</b>															
land first	Fairbanks	Double Denali		Anchorage	Homer	Whittier	Hubbard Glacier	Glacier Bay	Skagway	Juneau	Ketchikan	Inside Passage	Disembark Vancouver		
cruise first	Vancouver	Inside Passage	Ketchikan	Juneau	Skagway	Glacier Bay	College Fjord	Homer	Anchorage	Double Denali		Fairbanks	Cruisetour Ends		

## CLASSIC ALASKA & DENALI CRUISETOURS (1 NIGHT AT DENALI)

	DAY 0	1	2	3	4	5	6	7	8	9	10	
<b>D7</b>												
land first	Fairbanks	Denali	Anchorage	Whittier	Hubbard Glacier	Glacier Bay	Skagway	Juneau	Ketchikan	Inside Passage	Disembark Vancouver	
cruise first	Vancouver	Inside Passage	Ketchikan	Juneau	Skagway	Glacier Bay	College Fjord	Anchorage	Denali	Fairbanks	Cruisetour Ends	
<b>D8</b>												
land first	Fairbanks	Denali	Whittier	Hubbard Glacier	Glacier Bay	Skagway	Juneau	Ketchikan	Inside Passage	Disembark Vancouver	DIRECT TO DENALI	
cruise first	Vancouver	Inside Passage	Ketchikan	Juneau	Skagway	Glacier Bay	College Fjord	Denali	Fairbanks	Cruisetour Ends		
<b>D9</b>												
land first	Anchorage	Talkeetna	Denali	Whittier	Hubbard Glacier	Glacier Bay	Skagway	Juneau	Ketchikan	Inside Passage	Disembark Vancouver	DIRECT TO DENALI
cruise first	Vancouver	Inside Passage	Ketchikan	Juneau	Skagway	Glacier Bay	College Fjord	Denali	Talkeetna	Anchorage	Cruisetour Ends	

**COMING SOON**



# 2026 CRUISETOUR ITINERARY OPTIONS Alaska, Denali & Yukon



**INCLUDED TRANSPORTATION**  
Cruisetour flights require passport information and middle names, if applicable, to be submitted at the time of booking.

- Air Travel
- Land Transportation
- Rail Transportation
- Y1–Y2 Ship Travel
- Y3–Y6 Ship Travel

On Land At Sea Luxury Railcar Luxury Motorcoach Cruise Plane

VISIT [HOLLANDAMERICA.COM](http://HOLLANDAMERICA.COM) OR CONTACT YOUR TRAVEL ADVISOR OR PERSONAL CRUISE CONSULTANT TODAY.

Cruise itineraries and onboard offerings are not guaranteed. Charges may apply to some activities, venues and menu items.

## ALASKA, DENALI & YUKON CRUISETOURS WITH GLACIER DISCOVERY CRUISE

Y1	DAY 0	1	2	3	4	5	6	7	8	9	10	11	12	13
land first	Vancouver	Dawson	Fairbanks	Triple Denali	Anchorage	Whittier	Hubbard Glacier	Glacier Bay	Skagway	Juneau	Ketchikan	Inside Passage	Disembark Vancouver	
CONT'D	14	15	16	17										
		Juneau	Ketchikan	Inside Passage	Disembark Vancouver									
cruise first	Vancouver	Inside Passage	Ketchikan	Juneau	Skagway	Glacier Bay	College Fjord	Anchorage	Triple Denali	Fairbanks				
CONT'D	14	15	16	17										
		Dawson	Vancouver	Cruisetour Ends										

Y2	DAY 0	1	2	3	4	5	6	7	8	9	10	11	12	13	14
land first	Vancouver	Dawson	Double Denali	Anchorage	Whittier	Hubbard Glacier	Glacier Bay	Skagway	Juneau	Ketchikan	Inside Passage	Disembark Vancouver			
cruise first	Vancouver	Inside Passage	Ketchikan	Juneau	Skagway	Glacier Bay	College Fjord	Anchorage	Double Denali	Dawson	Vancouver	Cruisetour Ends			

Y7	DAY 0	1	2	3	4	5	6	7	8	9	10	11	12	13
land first	Fairbanks	Dawson	Triple Denali	Whittier	Hubbard Glacier	Glacier Bay	Skagway	Juneau	Ketchikan	Inside Passage	Disembark Vancouver			

DIRECT TO DENALI

## ALASKA, DENALI & YUKON CRUISETOURS WITH ALASKA INSIDE PASSAGE CRUISE

Y3	DAY 0	1	2	3	4	5	6	7	8	9	10	11	12	13	14
land first	Anchorage	Triple Denali	Fairbanks	Dawson	Whitehorse	Skagway	Skagway	Glacier Bay	Ketchikan	Inside Passage	Disembark Vancouver				
cruise first	Vancouver	Inside Passage	Juneau	Skagway	Whitehorse	Dawson	Fairbanks	Triple Denali	Anchorage	Cruisetour Ends					

Y4	DAY 0	1	2	3	4	5	6	7	8	9	10	11	12
land first	Anchorage	Double Denali	Fairbanks	Dawson	Skagway	Skagway	Glacier Bay	Ketchikan	Inside Passage	Disembark Vancouver			
cruise first	Vancouver	Inside Passage	Juneau	Skagway	Dawson	Fairbanks	Double Denali	Anchorage	Cruisetour Ends				

Y5	DAY 0	1	2	3	4	5	6	7	8	9	10	11
land first	Anchorage	Double Denali	Fairbanks	Dawson	Whitehorse	Skagway	Glacier Bay	Ketchikan	Inside Passage	Disembark Vancouver		
cruise first	Vancouver	Inside Passage	Juneau	Whitehorse	Dawson	Fairbanks	Double Denali	Anchorage	Cruisetour Ends			

Y6	DAY 0	1	2	3	4	5	6	7	8	9
cruise first	Vancouver	Inside Passage	Juneau	Dawson	Fairbanks	Double Denali	Anchorage	Cruisetour Ends		



# 2026 CRUISETOURS Features & Dining Plans



COMING SOON



## GREAT LAND DINING PLANS

Relax and focus all your attention on Alaska & the Yukon’s spectacular sights, amazing wildlife, and historic outposts, knowing that most of your meals — and gratuities — have been pre-planned and paid for with our Great Land Dining Plan. Choose a breakfast-only, Denali or full dining plan to pair with your journey. Dining plans are available on cruisetours only.



Explore Denali room upgrade options

CRUISETOUR FEATURES	D1	D2	D3	D4	D5	D6	D7	D8	D9	D0	DH	Y1	Y2	Y3	Y4	Y5	Y6	Y7
<b>GLACIER BAY NATIONAL PARK &amp; PRESERVE</b> Full day of scenic cruising and glacier watching	✓	✓	✓	✓	✓	✓	✓	✓	✓	✓	✓	✓	✓	LF*	LF*	LF*		LF
<b>MCKINLEY EXPLORER®</b> Luxury domed railcars between Anchorage and Denali	✓	✓	✓	✓	✓	✓	✓	✓	✓	✓	✓	✓	✓	✓	✓	✓	✓	✓
<b>TUNDRA WILDERNESS TOUR (S)*</b> 5- to 6-hour wildlife-spotting adventure deep into Denali	✓	✓	✓	✓	✓	✓				✓	✓	✓	✓	✓	✓	✓	✓	✓
<b>DENALI NATURAL HISTORY TOUR</b> 4½- to 5-hour tour of Denali’s cultural and natural history							✓	✓	✓									
<b>TOUR DIRECTOR</b> Expert narration and travel coordination on land											✓	✓	✓	✓	✓	✓	✓	✓
<b>RIVERBOAT DISCOVERY (L) IN FAIRBANKS</b> Cruise the Alaska interior on an authentic sternwheeler	✓		✓	✓	✓		P	P		✓	✓	✓	CF	✓	✓	✓		✓
<b>GOLD DREDGE 8 IN FAIRBANKS</b> Pan for gold at an actual mining camp	P		✓	✓	P		P	P		P	✓	✓						
<b>WHITE PASS &amp; YUKON ROUTE RAILWAY</b> Spectacular mountain ride on a narrow-gauge train														✓	✓	✓	✓	
<b>DIRECT TO DENALI</b> Go between the ship and Denali; no overnight in Anchorage		R				M		R	R	R								R
<b>DIRECT RAIL TO THE SHIP</b> Follow Alaska’s dramatic coastline by rail	✓	✓			✓		U	✓	✓	✓		✓	✓					✓
<b>PORTAGE GLACIER</b> View Ice Age-era icebergs from just 300 yards away		P	✓	✓		P			P									
<b>HOLLAND AMERICA DENALI LODGE ROOM UPGRADES</b> Deluxe Rooms or Denali Suites offer enhanced amenities	U	U	U	U	U	U	U	U	U	U	U	U	U	U	U	U	U	U
<b>SEATTLE CRUISETOUR CONNECTOR</b> Make your cruisetour roundtrip from Seattle	✓					✓		✓							✓			
<b>KLONDIKE GOLD TOUR</b> Visit the historic site that triggered the Klondike Gold Rush												✓	✓	✓	✓	✓	✓	✓

L = Lunch included; S = Snack included, full lunch upgrade available; U = Upgrade; P = Pre/post additional excursion; CF = Cruise First cruisetours only; LF = Land First cruisetours only; R = McKinley Explorer railway between the ship and Denali; M = Luxury motorcoach with included lunch between the ship and Denali. ♦ In lieu of Glacier Bay, Y3–Y6 Cruise First cruisetours offer an OPTIONAL excursion to Tracy Arm and the twin Sawyer Glaciers. ■ Visits to the park in May and September are dependent on conditions. If necessary, the **Tundra Wilderness Tour** may be replaced by the **Denali Natural History Tour**. **INCLUDED DINING:** All cruise dining is included. An additional snack is provided on the **Tundra Wilderness Tour**. Lunch is included before or after the Riverboat *Discovery* cruise as well as on the luxury motorcoach between Anchorage and Denali (D2), Whittier and Denali (D6), Anchorage and Homer (DH), Fairbanks and Denali (D3 Land First and D4 Land First), and Dawson City and Whitehorse (Y3, Y4, and Y5).



# WE ♥ ALASKA

Skagway, Alaska

Explore Alaska with our 360° sensory programming immersing you in all facets of Alaska. Our perfectly sized ships get you close-up views of glaciers, wildlife, and wilderness while you enjoy dining and entertainment that fosters a deeper connection to the people, history, and culture of the state.



# Discover Alaska

ONBOARD ENRICHMENT

## Experience Alaska through all senses with immersive onboard programming

### ONBOARD EXPERTS

National Park Service Rangers and Alaska Native Voices Cultural Ambassadors describe the history and cultural significance behind every sight

### GLACIER DAY

Every Alaska cruise includes at least one "Glacier Day," featuring special programming, 360° glacier views and more

### ALASKA UP CLOSE PRESENTATIONS

Insightful entertainment from expert speakers on the World Stage

### WILDLIFE SPOTTING

Find out the best times and places for spotting otters, bears, and more from our onboard Wildlife Experts

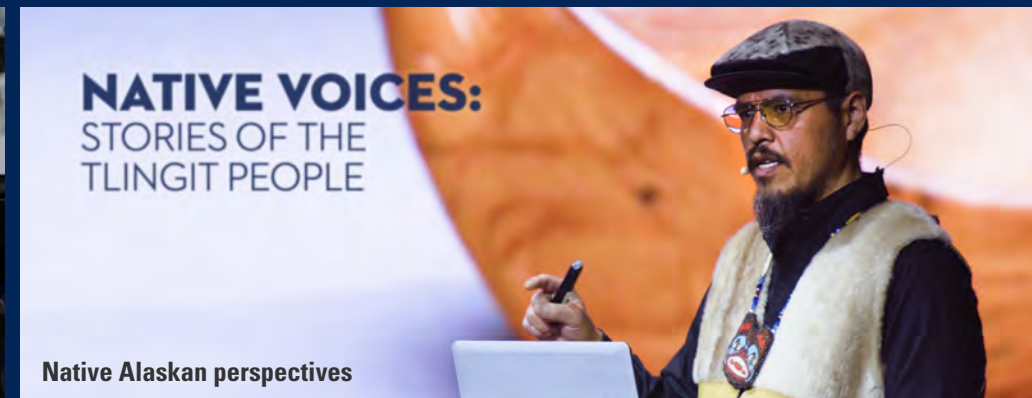


Authorized Concessioner  
Glacier Bay National Park

National Park Service Ranger



Insights from onboard experts



Native Alaskan perspectives

Click to **LEARN MORE** about **ALASKA UP CLOSE** 

# Taste Alaska

FRESH LOCAL FAVORITES



**Our Destination Dining™ tells the story of Alaska through its unique flavours and fresh local ingredients**

### FRESH SUSTAINABLE SEAFOOD

As part of our Global Fresh Fish Program, we serve only 100% fresh, traceable wild Alaska seafood that is certified sustainable by Responsible Fisheries Management

### CATCH AND COOK

Reel in your own salmon or halibut in the waters of Juneau or Ketchikan and have it prepared on board through our *Savour My Catch* program\*

### THEMED MENUS

Savour seafood boils, salmonbakes, GoldRush dinners and more!

Click to **LEARN MORE** about **ALASKA UP CLOSE® DINING** 



### SERVING AUTHENTIC GLACIAL ICE COCKTAILS

We've partnered with Alaska Glacial Ice to source already-calved glacial ice from 800-year-old Alaska glaciers to use in our signature cocktails.

- Juneauper Gin & Tonic
- Blue Iceberg
- Alaska Blue Ice
- Black & Blue
- Blue on Blue
- Whiskey Over America's Glacial Ice

# Experience Alaska

SHORE EXCURSIONS

**Seeing wild Alaska is not enough — you must get out and experience it**

## CONNECT WITH ALASKA

Learn more about the people, culture and history of Alaska

## KEEP WATCH FOR WILDLIFE

Scout for wildlife on our 175+ animal sanctuary, sightseeing and shore excursions

## GET CLOSER TO GLACIERS

See the state's blue-hued giants by foot, bike, kayak and more  
Charges apply for shore excursions.

Click to **LEARN MORE** about **ALASKA UP CLOSE® EXCURSIONS**



Tracy Arm Fjord, Alaska



White Pass & Yukon Route Railway



Meet future sled dogs



# Dining

## BARS & LOUNGES

Find everything from fresh seafood, specialty coffee, and craft cocktails to burgers, pasta, and fresh-made desserts. You can even treat yourself to breakfast in bed or a late-night snack with our complimentary 24-hour room service.

### COMPLIMENTARY DINING OPTIONS

- |                      |                 |
|----------------------|-----------------|
| 24-hour room service | Lido Market     |
| Dining Room          | New York Pizza† |
| Dive-In              |                 |

### SPECIALTY RESTAURANTS

- |                 |                   |
|-----------------|-------------------|
| Canaletto       | Pinnacle Grill    |
| Morimoto by Sea | Rudi's Sel de Mer |
| Nami Sushi      | Tamarind          |

### COFFEE & TREATS\*

- |                  |                  |
|------------------|------------------|
| Crow's Nest Café | Grand Dutch Café |
| Gelato           | Library Café     |

### BARS & LOUNGES\*

- |                   |              |              |
|-------------------|--------------|--------------|
| Crow's Nest       | Ocean Bar    | Tamarind Bar |
| Explorer's Lounge | Panorama Bar | Taste        |
| Lido Bar          | Pinnacle Bar |              |
| MIX               | Sea View Bar |              |



Surf 'n' Turf



Triple Berry Alaska Tart



Offerings vary by ship. Scan or click here to compare dining, activities, and other amenities across our fleet.

[CLICK HERE TO LEARN MORE](#)



\*Charges may apply to some activities, venues and menu items.

# Activities

## DAY & NIGHT

Begin your day with a meditative Tai Chi session, a spin class in the Fitness Center, or an alfresco stroll around our teak Promenade Deck. Spend the afternoon making friends on the pickleball court or creating a masterpiece at one of our guided painting sessions. Once the sun sets, try your luck in the Casino, catch an interactive game show, or dance the night away at our award-winning music clubs.



Song & Dance on the World Stage

### MUSIC CLUBS



### SPORTS & ACTIVITIES

- |                         |                         |
|-------------------------|-------------------------|
| Acrylic Paint on Canvas | Pickleball              |
| Adult Colouring         | Punch Needle Embroidery |
| Cornhole                | Shuffleboard            |
| Flower Arranging        | Table Tennis            |
| Modern Brush Lettering  | Tai Chi                 |
| Origami                 | Watercolor Painting     |



Sport Court



Billboard Onboard



Offerings vary by ship. Scan or click here to compare dining, activities, and other amenities across our fleet.

[CLICK HERE TO LEARN MORE](#)



. Charges may apply to some activities, venues and menu items.

# THE ULTIMATE Spa Experience

Recharge in peaceful seclusion in our Lido or Retreat cabanas\*, featuring dedicated butler service and complimentary sparkling wine. Pamper yourself at sea as you indulge in the award-winning Spa & Salon's Thermal Suite and Hydropool.

## SPA SERVICES

- Acupuncture Services
- Couples' Treatments
- Facial Treatments
- Hair & Nail Services
- Massage & Body Therapies
- Medi-Spa Treatments
- Teeth Whitening
- Thermal Suite & Hydropool

## WELLNESS & FITNESS

- Body Composition Analysis
- Circuit Training
- Fitness Center
- Guided Meditation
- Nutritional Consultation
- Pain Management Workshop
- Personal Training
- Sport Court



Retreat Cabana



Thermal Suite



Fitness Center



Offerings vary by ship. Scan or click here to compare dining, activities, and other amenities across our fleet.

[CLICK HERE TO LEARN MORE](#)



\*Charges may apply to some activities, venues and menu items.

LIMITED-TIME OFFER

# Early Booking *Bonus* Have it all.™

HAVE IT ALL EARLY BOOKING BONUS

Save up to 60% on top amenities with the Have It All Early Booking Bonus\*! Enjoy all the benefits of our standard Have It All package, including Shore Excursion and Specialty Dining Credits, plus prepaid Crew Appreciation, and upgrades to the Elite Beverage Package and Premium Wi-Fi.



Glacier Bay National Park & Preserve

## BOOK EARLY TO RECEIVE OUR BEST VALUE ON TOP AMENITIES



### PREPAID CREW APPRECIATION

Crew Appreciation, or stateroom gratuities, is covered for you (a value of us\$17 per day for Interior, Ocean View, and Verandah staterooms and us\$19 per day for suites) to recognize the efforts of a wide variety of crew members who contribute to the experiences of all our guests.



### UPGRADE PREMIUM WI-FI

Stay connected throughout your journey. Surf the web, use social media, check email, and send messages to family and friends.



### UPGRADE ELITE BEVERAGE PACKAGE

Choose from a large selection of wine, beer, spirits, and cocktails, plus non-alcoholic options such as sodas, coffees, and more — with service charges included.



### SPECIALTY DINING

Enhance your cruise with award-winning specialty dining at Canaletto, Tamarind, or the famed Pinnacle Grill — with service charges included.



### SHORE EXCURSIONS

The longer you cruise, the more you can explore!

- Cruise 6–9 days and receive us\$100 Shore Excursion Credit
- Cruise 10–20 days and receive us\$200 Shore Excursion Credit
- Cruise 21+ days and receive us\$300 Shore Excursion Credit

Book Today – Limited-Time Offer

## Early Booking *Bonus* Have it all.™

Up to 3 Nights' Specialty Dining

*Includes service charges; varies by voyage*

Up to us\$300 Shore Excursion Credit

*Varies by voyage length*

UPGRADE  
Elite Beverage Package

*Includes service charges*

UPGRADE  
Premium Wi-Fi

Prepaid Crew Appreciation

*Gratuities*

Click to see our **HAVE IT ALL**  
**EARLY BOOKING BONUS ITINERARIES**





# TERMS & CONDITIONS

## RESERVATIONS

Accommodations are limited. If you use a travel agent/travel agency ("TA") to book your reservation, you shall pay deposits and payments for Holland America Line's ("HAL") services to such TA. HAL will issue travel documents only if and when it has received full payment from TA. HAL will make any refunds to the applicable TA based only on the amount HAL actually received, less any applicable cancellation fees and charges; guest is responsible for obtaining any refund monies from TA.

## DEPOSIT & FINAL PAYMENT REQUIREMENTS

Deposit is required at the time of cruise booking and final payment of balance must be received no later than 90 days prior to departure.

## CANCELLATIONS

Our cancellation policy allows you to cancel your 2026 Alaska cruise 90+ days prior to departure, depending on the cruise, and receive a full refund. If you cancel your 2026 Alaska cruise 89 days or less prior to departure, depending on the cruise, you are required to pay a cancellation fee (including 3rd and 4th berths) as set forth below. Unless otherwise stated, the Refund Amount is determined by reference to the Total Fare (including taxes, fees and port expenses), less any third party charges for which We are liable even if you cancel e.g. onshore activity cancellation charges. "Total Fare" is the total amount payable to US for Your booking excluding any payment made towards Cancellation Protection Plan which is non-refundable. See more details in the Cruise Contract. For 2026 Alaska, the cancellation fee amount varies based on the length of sailing and timing of cancellation as follows

2026 ALASKA CRUISES – 7- TO 14-DAY CRUISES For USD, Australian and Canadian pricing	
Number of Days Before Sailing Date on Which Guest Cancels Cruise	Amount of Cancellation Fee
90+ days notice	full refund provided
83-89 days notice	deposit amount
46-82 days notice	50% of total fare
45 days or less notice	100% total fare

\*\*The above cancellation schedule does not apply to the 28-Arctic Circle Solstice Cruise. It is as followed

28-DAY ARCTIC CIRCLE SOLSTICE CRUISE	
Number of Days Before Sailing Date on Which Guest Cancels Cruise	Amount of Cancellation Fee
120+ days notice	full refund provided
113-119 days notice	deposit amount
76-112 days notice	50% of total fare
75 days or less notice	100% of total fare

## CREW APPRECIATION & SERVICE CHARGES

For your convenience, Crew Appreciation will automatically be added to your onboard account to recognize the efforts of a wide variety of crew members in various departments, including those in the Dining, Entertainment, Guest Services, and Galley areas. For sailings departing on or after February 14, 2024, the daily Crew Appreciation is US\$17.00\* per guest per day for non-suite stateroom guests and US\$19.00\* per guest per day for suite guests. The Crew Appreciation charge is paid to Holland America Line team members and represents an important part of their compensation. An 18% service charge is automatically applied to all beverage purchases, bar retail items, specialty restaurant cover charges, all for-purchase a la carte menu items, and all Spa & Salon services. Local sales taxes are applied where required.

\*The charges are subject to change without notice.

## GUESTS WITH DISABILITIES

Holland America Line seeks to accommodate the needs of guests with disabilities. Some accommodations require advanced notification. For more information, visit the Accessible Cruising section of our website

## MEDICAL SERVICES

Each of our ships is equipped with limited medical facilities that are staffed by a physician and registered nurses. Guests will be charged a fee for all medical services and medications obtained on board. If the onboard physician is unable to care for your needs on board, you will be transferred to medical facilities on shore at your own expense. Accordingly, we strongly recommend you purchase appropriate international travel insurance at the time you pay your deposit. If your condition will require you to have a special medical apparatus or assistance on board, we must be made aware of that at the time of booking in order to determine whether we can accommodate your needs.

## PASSPORTS / VISAS / IMMUNIZATIONS

You are solely responsible for securing and having available all proper documentation for the countries visited on your cruise or land tour and for bringing all necessary travel documents such as passports, visas, proof of citizenship, re-entry permits, minors' permissions, and medical certificates showing all necessary vaccinations. Guests should check with their TA or the appropriate governmental authority to determine the necessary documents. Guests may be refused boarding, disembarked or prevented from disembarking in a port of call if they do not have proper documentation.

## OTHER SERVICES & INDEPENDENT CONTRACTORS

In addition to the Cruise, You may choose to book Other Services in connection with YourCruise. This can cover things like:

- 1.flights,
- 2.transfers,
- 3.hotels,
- 4.shore tours, ('Other Services', and separately as 'Other Service').

We may assist You in booking Other Services. Other Services are owned, supplied and/or operated by Independent Contractors ('Other Service providers'). Other Service providers are solely responsible for the information and Other Service offered, and their conditions will apply.

## CHANGES OR CANCELLATIONS BY US

Sometimes things can happen that may affect Your Cruise. This could include changes to Laws, weather or environmental conditions, mechanical difficulties, health or safety emergencies, civil unrest, industrial action or other unforeseen circumstances outside of Our control. In these circumstances, We may need to cancel or make changes to Your booking. We also may make changes or cancel Your booking due to circumstances that are within Our control for operational reasons.

Changes made by Us may take the form of a:

- 1.change to the planned itinerary;
- 2.charter of all or part of the ship; or
- 3.change of the ship.

We will take reasonable steps to notify You of any changes to or a cancellation of YourCruise as soon as We can. If You booked Your Cruise directly with Us, We will contact You using the contact information You provided in Your booking. If You make a booking through Your travel agent, We will notify Your travel agent and Your travel agent is responsible for contacting You about any changes or cancellations

## ACCURACY OF CONTENTS / GENERAL

Contents of this brochure, including terms and conditions, are subject to change at any time at the sole discretion of HAL. Please refer to HollandAmerica.com for up-to-date information. Any advertised offer may be changed or revoked at any time. Situations may arise which, in our opinion, make it necessary for us to cancel, advance, or postpone a scheduled departure, change itineraries, or make substitutions involving hotels, restaurants, ports of call, other travel components, vessels, or other modes of transportation. In that event, we do not assume responsibility or liability for any resulting losses, expenses, or inconvenience. We are not required to make refunds once travel commences, regardless of the reason for guests being unable to complete their travel. The ship names and all other trademarks, slogans, logos, and imagery used herein are, whether or not registered, owned by Holland America Line N.V.



Travel Advisors: For more information and bookings please contact Francis Travel Marketing on 09 444 2298 or email [reservations@francistravelmarketing.co.nz](mailto:reservations@francistravelmarketing.co.nz)

OR VISIT  
[HOLLANDAMERICA.COM](https://www.hollandamerica.com)



## HAVE IT ALL EARLY BOOKING BONUS TERMS & CONDITIONS

**Have It All fare ('HIA fare')** applies to the first 2 guests in the stateroom and includes the cruise fare packaged with shore excursion credit, the Signature Beverage Package, Wi-Fi Surf Package; and specialty dining credits. Fare terms and conditions: [https://www.hollandamerica.com/en\\_US/deals\\_AUD/have-it-all/have-it-all-upgrade.html](https://www.hollandamerica.com/en_US/deals_AUD/have-it-all/have-it-all-upgrade.html)

**Early Booking Bonus Offer ('EBB Offer')**: ends 1 October 2024, unless allocation exhausted earlier. BB Offer and inclusions apply to the first 2 guests in the stateroom. Available on new bookings only. All EBB Offer inclusions are not transferable, substitutional, refundable or redeemable for cash. EBB Offer inclusions apply to the eligible cruise only and expire at the end of that cruise. EBB Offer available on new bookings on select 2025 and 2026 departures only and excludes land portion of Alaska cruisetours. **Elite Beverage Package**: EBB Offer includes a free upgrade of the Signature Beverage Package included in the HIA fare to the Elite Beverage Package. Valid for the first 2 guests in stateroom aged 21 years or over on departure date. Drinks outside or above the package inclusions will be charged to the guest's onboard account. Beverage Package Terms and Conditions: <https://www.hollandamerica.com/en/au/onboard-packages/beverage-packages#:~:text=VENUES%20ON%20BOARD-,Terms%20%26%20Conditions,SEE%20MORE,-Travel%20is%20Our.> **Shore Excursion credit** is based on cruise duration and is per person, not per stateroom. For Alaska cruisetours and 6- to 9-day cruises, eligible guests will receive US\$100 credit per person to apply toward their shore excursion purchase(s). For 10- to 20-day cruises, eligible guests will receive US\$200 credit per person to apply toward their shore excursion purchase(s). For 21+ day cruises (excluding Grand Voyages), eligible guests will receive US\$300 credit per person to apply toward their shore excursion purchase(s). Shore Excursion credit must be used pre-cruise when applied toward an Alaska Cruisetour Land Excursion purchase. Shore Excursion credit must be used on corresponding cruise and is non-refundable. Shore Excursion credit can neither be redeemed for cash value or airport transfers nor applied to a non-shore excursion item. **Wi-Fi Premium Package**: EBB Offer includes free upgrade of the Wi-Fi Surf Package included in the HIA fare to the Wi-Fi Premium Package. Wi-Fi terms and conditions: <https://www.hollandamerica.com/en/au/onboard-packages/cruise-ship-wifi>. **Crew Appreciation**: EBB Offer includes Crew Appreciation paid on behalf of the guest for stateroom gratuities only and does not include other service charges including, but not limited to Crew Appreciation for bar, dining room, wine accounts and spa/salon services. All travel is subject to the Holland America Line Cruise Contract: <https://www.hollandamerica.com/en/au/legal-privacy/cruise-contract>, which guests are bound by. Cruise itineraries and onboard offerings are not guaranteed. Charges may apply for some activities, venues and menu items. Credit card surcharges (Visa/Mastercard 1.1%; AMEX 2.75%). Carnival plc trading as Holland America Line ABN 23 107 998 443.



HOLLAND AMERICA LINE  
**NAVIGATOR**  
DOWNLOAD THE  
NAVIGATOR® APP

The **Holland America Line Navigator® App** is your indispensable tool for cruise planning, essential updates, embarkation, managing your onboard experience and booking shore excursions.